



Programme of Measures for 2022 - 2027

Nordic WFD conference Vaasa, Finland

Sunniva S. Hartmann
Senior Advisor - Water Section



Scope of the presentation

1. *Status of the Programmes of Measures (PoMs) in Norway*
2. *Results of the evaluation after the first formal planning cycle for the PoMs*
3. *Improvements for the second cycle of PoMs*



Status

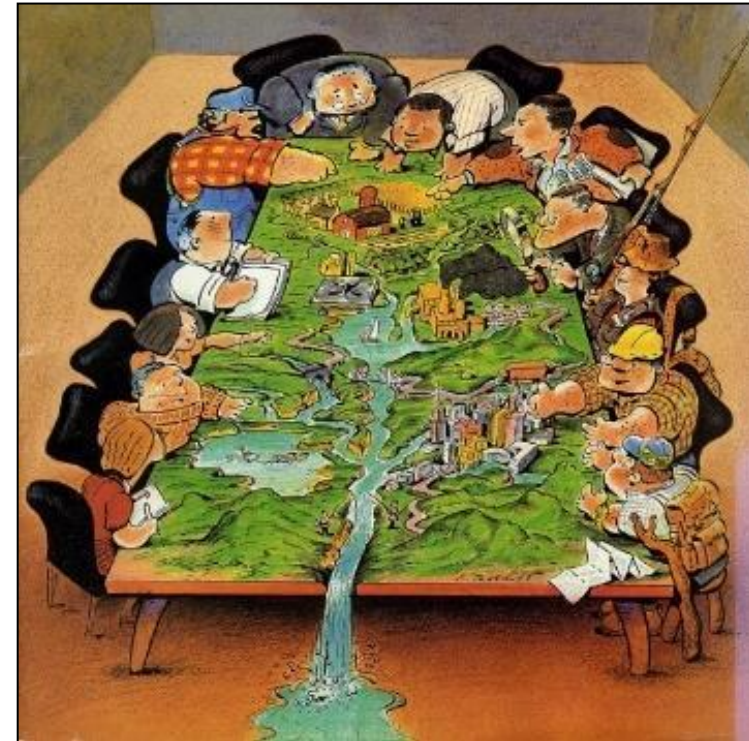
- 2007-2009 Pilot phase (voluntary)
- 2010 - 2015 First formal planning cycle completed (plans to be implemented 2016-2021)
- 2016 - RBMPs and PoMs adopted. Evaluation completed - recommendations decided.
- 2016 -2019 Implementing the results from the evaluation
- 2019 - 2021 Review and update of PoMs for next cycle



Evaluation of the first cycle of planning

Evaluation of the PoMs included

- Too much detail (... and too little detail)
- Unclear priorities
- No cost estimates (almost..)
- Considered benefits not included in PoMs



Improvements for the second cycle



Revision of PoM-module in the database (Vann-Nett)

- Reducing the number of measure types from 250 to 100
- Distinction between basic measures and supplementary measures
- Organizing measure types according to key type measures (KTM)
- Incorporating a national register of instruments, measures and authorities
- Ensure quantification of measures

New template for the PoMs

- Defining cost estimates and consideration of benefits



Improvements for the second cycle

Measure details: 5101-2417-M Vurdere videre tiltak mot miljøgifter

INFORMATION MEASURE STATUS WATERBODIES EFFECT COSTS EXEMPTION ARCHIVE

BACK X CLOSE

Information on measures

DELETE SAVE

Measures ID	5101-2417-M
Measure type	EnInformasjon og kompetansebygging (MT101)
Measure group	KTM14 – Research, improvement of knowledge base reducing uncertainty
Description	en-Omfatter all form for informasjon som er knyttet til kunnskap og kompetansebygging
Pressure	Diffus avrenning fra byer/tettsteder
Measure name	<input type="text" value="Vurdere videre tiltak mot miljøgifter"/>
Priority	<input type="text" value="Denne planperioden"/>
Preventive	<input type="text" value="Forebyggende og avbøtende"/>
Legislation	<input type="text" value="Plan- og bygningsloven Kap 11"/>
Sector authority	<input type="text" value="Municipality"/>
Preforming	<input type="text" value="Select element"/>
Comment	<input type="text" value="Virkemiddel er vurdert il å være PBL kapittel 9 om interkommunalt plansamarbeid, men dette er ikke valgbart."/>

Measure status Utsatt

Waterbodies

Effect

Kartverket, Geovekst og kommuner - Geodata AS 52



Going forward

- There will always be room for improvements to the process and the PoMs itself
- Water management is an iterative process, and we should aim to improve from one cycle to the next



